



# Old Heather Pavilion to be returned to its former, uncluttered elegance

Decades of unsightly additions are to be demolished

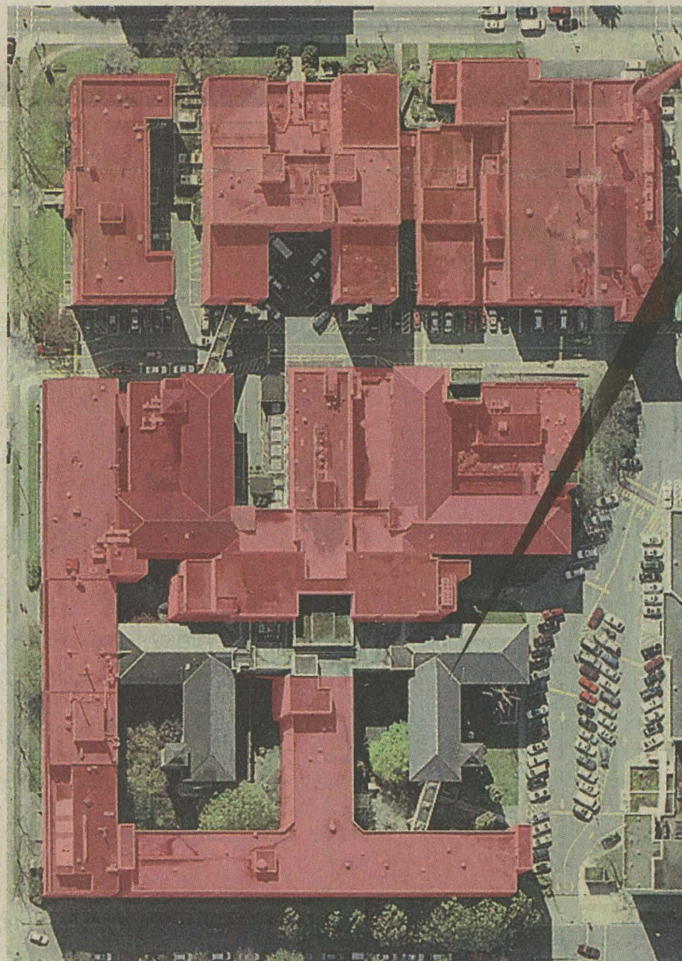
BY GERRY BELLETT  
VANCOUVER SUN

The historic Heather Pavilion, one of Vancouver's most beautiful public buildings, is buried behind a hodge-podge of additions, additions and annexes — with hideous concrete buildings fastened to every corner.

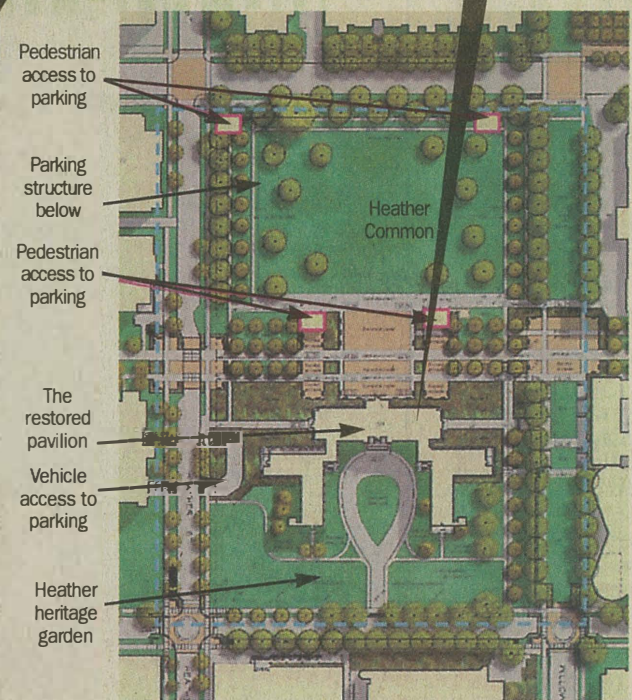
The elegant 100-year-old architectural gem of stone turrets and lavish cupolas is impossible to appreciate today, hidden as it is by what was tacked on over the years as Vancouver General Hospital struggled with the demand for new facilities as the city grew.

The resulting jumble of buildings between Heather and Willow — with parts of the pavilion incongruously sticking out — is probably the ugliest collection of public buildings in Vancouver.

That will all change when the dust from the jackhammers settles and a newly uncovered Heather Pavilion forms the centrepiece of a



The Heather Pavilion in 1930 (above), 24 years after it was built and before it was hemmed in by additions and other buildings — many in plain concrete. Arrows show the pavilion on two maps: First (left) as it now appears, surrounded by buildings marked in red that are to be demolished; and (below) surrounded by gardens as it will look after the 'excavation' project.



See **OUT WITH B4**